

Klub...17

Our Success from Clients Success...!



Klub is...

One of the communication media published by Kingsmen C.M.T.I. Plc. as a periodical publication to showcase some of the works completed by the company for clients in various business sectors...progressing from one client to the other and from one business sector to a variety of business profiles, confirming our belief that “our clients’ success is our success”.

In this Klub, readers understand what Kingsmen C.M.T.I. Plc. can deliver to clients today. We cover comprehensive services from our core expertise of design and build for exhibitions and events to interiors, and have diverted to other new business sectors in museums and thematic parks or attractions, and lastly to alternative marketing that includes full service of marketing.

We hope you will enjoy some of our work experiences highlighted within and should there be any thought that Kingsmen C.M.T.I. Plc. can be of service to your marketing strategies and business objectives, please do let us know at your earliest convenience.





K...Stories

Kingsmen C.M.T.I. Plc. has been established in Thailand since 1989 to offer design & build for retail interiors, exhibitions & events, thematic & museums and engineering & architecture including marketing activities and marketing communications services.

The company is committed to operate under management standards and safety practices. We also implement corporate governance practices that includes transparency and integrity with sustainability approaches.

We believe in offering good quality and services will secure satisfaction from our clients and partners. Our belief is that when clients look good, we also look good and always, Clients success is also our Pride...



The world of business is ever-changing with an integration of Digital Economy which takes a major role in driving our economic forces forward.

Thus, we have to always be ready for a leap into this rapid urbanization change towards Economy 4.0 in order to adjust and adapt our capabilities against any incoming business competitiveness both on the valued production platform and service provision.

Kingsmen C.M.T.I. Plc., a service provider in design and construction, focuses on a one-stop-service solution that aims to readily respond to the demands of our Economy 4.0 clients via the usage of eco-friendly, energy-conserving technology and materials, as well as cost-effective use of spaces. This could be seen along with the adaptive transformation of telecommunications, banks, and retail industry, in which digital means were gradually implemented into their design for an instant visualization and an ability to supply to the client's requirement in real-time.

Mr. Chayawat Pisessith
Executive Chairman
Kingsmen C.M.T.I. Plc.

K...Activities

K...Forum 2017 @ C-ASEAN March 14, 2017

A forum to sharing, connecting and experiencing organized by Kingsmen C.M.T.I. Plc., under the topic of “See the World - Seen Us...Prepared for the Year of Rooster” and presented by Dr. Kirida Bhaopichitr, Research Director for International Research and Advisory Service, Thailand Development Research Institute (TDRI). The objective of the forum was to share findings and analytical facts about world's and regional situations as well as the economic outlooks for our clients, partners and company employees to understand the latest development and be prepared for coming challenges this year. The event will also allow clients to mingle and exchange experiences as well as relations tightening among the key executives of Kingsmen C.M.T.I. Plc.



K...Booth



Kingsmen C.M.T.I. Plc. Booth at Architect Expo 2017



Kingsmen C.M.T.I. Plc. Booth at Kids Charity 2017



Kingsmen C.M.T.I. Plc. Booth at Cambodia Architect & Decor 2017



Kingsmen C.M.T.I. Plc. Booth at MAI Forum 2017



INTERIORS

From imagination to creative and innovative design and build experiences...!

The Interiors business unit in Kingsmen C.M.T.I. Plc. covers variety of interiors work. This includes retail shops, corporate offices, hotel and residential rooms, department store brand shops and public area, eateries as well as fixtures production and roll-out management services.





Center Void & 2nd FLOOR

Siam Discovery

Scope of work:

Center Void, Lift and escalator works, Fixtures,
Pop up store, Digital Lab Zone (2nd Floor)

Total area: 5,000 m²

Duration: 240 days





Blúport

Hua Hin

Scope of work:

Public area, Hallway,
Sales area, Restroom

Total area: 7,200 m²

Duration: 120 days





Vivit Hostel Bangkok

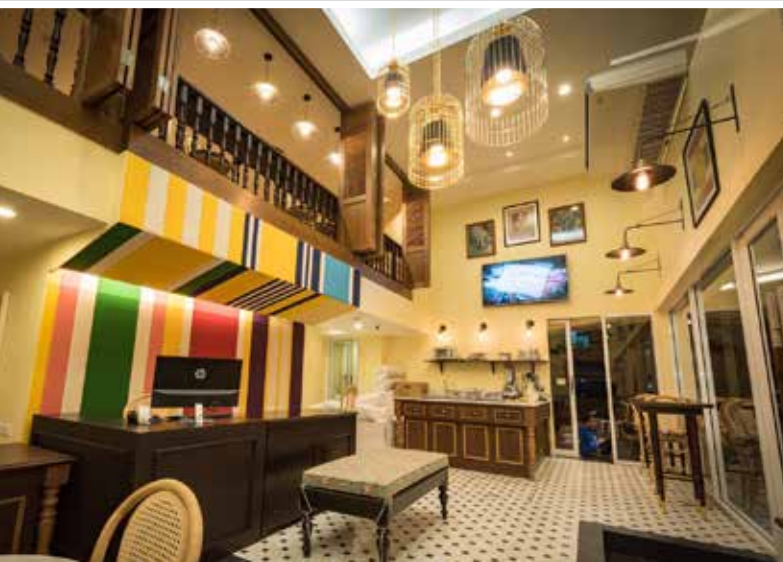
Tanao Road, Bangkok

Scope of work:

Turnkey, Design, Construction,
Floor, Wall, Ceiling

Total area: 600 m²

Duration: 180 days





GMS Duty Free

THE SHILLA Phuket

Scope of work:

Public area, Lounge, Hallway,
Sales area, Restroom

Total area: 21,000 m²

Duration: 180 days





La Galleria

Pattaya

Scope of work:

Public area, Hallway, Sales area, Restroom

Total area: 3,500 m²

Duration: 180 days





The accumulated achievement that contributes to our success is...the fact that we always strive to produce and deliver quality and service-driven experiences to the public. Our aim is to fulfill the demands and dreams of our clients, to expand the limits and redefine the scope of exhibition, providing one-stop-service solution that encircles throughout 360 degrees of any given tasks. From the satisfied responses that were acknowledged through our well-rounded job completion, a timely delivery, and our attention to service and detail, the honor that has been rewarded to us is the valuable “trust” of our clients.

Thus, we put great importance upon the basis of “care and consideration” to all elements and objectives in order to optimize the final result of every single projects possible, a compilation of which could be seen throughout our proudly presented Klub.

Ms. Sunisa Ratnanenya
Executive Director
Kingsmen C.M.T.I. Plc.



EXHIBITION & EVENTS, THEMATIC & MUSEUMS, ALTERNATIVE MARKETING (EMA)

We visualize clients' concept to reality with quality and creativity experiences. At Kingsmen C.M.T.I. Plc., we expand our business from our core sector, exhibition or trade show stand builder to new business landscape in events organizing or activities management services, museums or learning center design and build, thematic and attractions design and fulfillment, alternative marketing where we offer full services to clients for on-line and off-line marketing and communications services and lastly, engineering & architecture where we provide services on renovations, design and construction for architectural buildings, including construction management.



TATA

Bangkok International Motor Show 2017

Scope of work:

Design, Construction



H Sem Motor

Bangkok International Motor Show 2017

Scope of work:

Design, Construction, Event Management





Bangkok Insurance

Money Expo Bangkok, 2017

Scope of work:

Construction



Woogene R&G

VIV Asia 2017, Bangkok

Scope of work:

Construction



CK. Group

Money Expo Bangkok, 2017

Scope of work:

Design, Construction





The All-New BMW 5 Series Exclusive Preview

Mahanakhon Building, Bangkok

Scope of work:

Event Conceptual Design and Construction,
Event Management



GPX Battle of Custom Contest 2017

Impact Muang Thong Thani

Scope of work:

Event Conceptual Design and Construction,
Event Management, Video Presentation,
Staff Operation





Kids Charity

Central World

Scope of work:

Stage Design, Construction



Launching "K Mobile Banking PLUS" Application Event

KBank Head Office

Scope of work:

Event Management, Event Conceptual Design and Construction, Video Presentation, Staff Operation



The All-New BMW 5 Series (G30) Press Drive 2017

Nakhon Ratchasima

Scope of work:

Event Location Survey, Event Conceptual Design and Construction, Event Management, Staff Operation



The All-New MINI Countryman (F60) Press Drive & Test Drive 2017

Hua Hin – Pranburi, Prachuap Khiri Khan

Scope of work:

Event Location Survey, Event Conceptual Design and Construction, Event Management, Staff Operation



K... Design Studio

In 2017, Kingsmen C.M.T.I. Plc.'s Design Studio has merged with the Exhibition sector, the organization's advisor on design in the built environment, in order to demonstrate the value of industrial design which strengthen and redefine the experiences of our clients through the use of design.

We use design as the strategic tool to tackle major societal challenges, drive our growth and innovation, and improve the quality of the built environment. Our approach is people-centered and enables the delivery of positive social, environmental and economic changes.

We address all aspects of design including products, graphic, interior, service and user experience and design in our built environment as we are the member of the Kingsmen's design-led enterprise.

Together, we are passionate about using design to improve people's lives and we believe that design-led innovation can stimulate business growth, transform public services and enhance the success of our clients.

Alnex

Architect Expo 2017

Scope of work:

Design, Construction



CIMB Thai

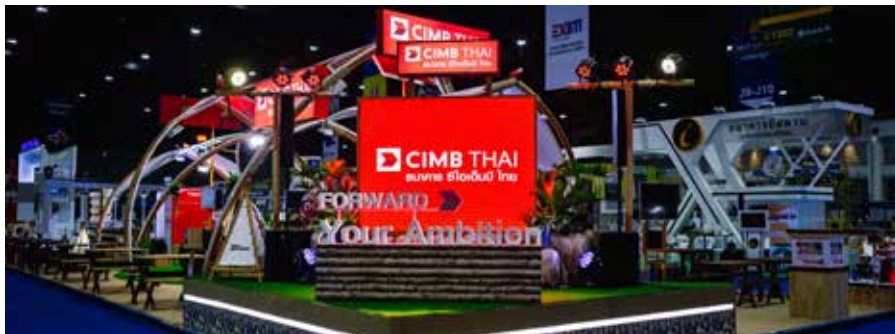
Money Expo 2017



EXCELLENT
AWARD

Scope of work:

Design, Construction



Electronic Transactions Development Agency (ETDA)

Money Expo 2017



OUTSTANDING
AWARD

Scope of work:

Design, Construction



Citi Bank

Money Expo Bangkok, 2017



Scope of work:

Design, Construction



Pioneer Rocket Sound

Bangkok International Motor Show 2017

Scope of work:

Design, Construction



Kohler's Museum of Sanitaryware

Kohler Saraburi, Thailand

Scope of work:

Design, Construction

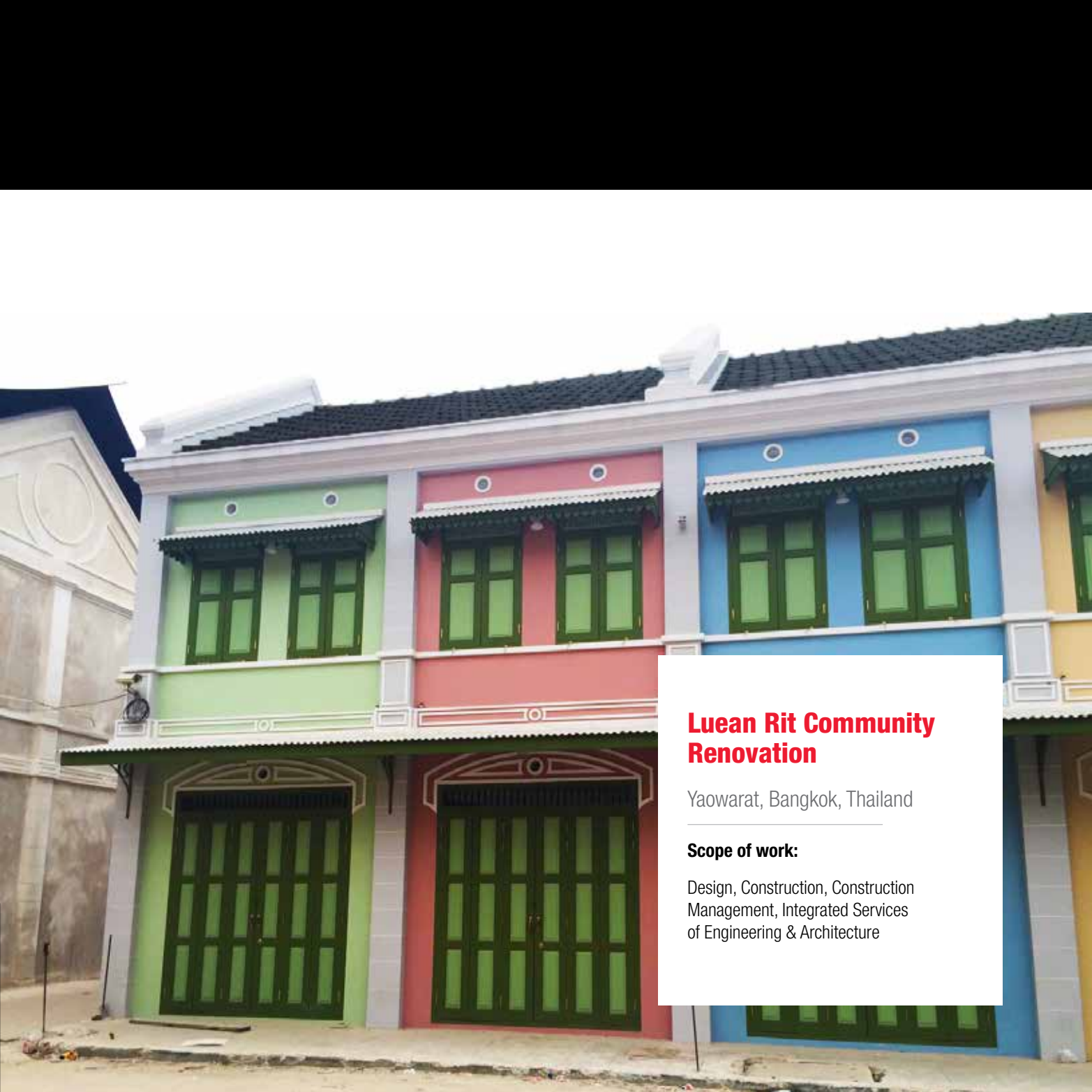


ARCHITECTURE, ENGINEERING, INTERIORS (AEI)

Kingsmen C.M.T.I. Plc. is advancing towards the expansion of Architecture and Engineering segment to support the demands on renovations and full-fledged construction within, but is not limited to, the category of institutes, vehicle showrooms, golf club house, and warehouses. To provide our clients with a well-rounded assistance, we also offer services on professional consultations regarding construction management.

Our scope of work includes:

Renovation & Build for Building • Construction Management
Design & Construction for Building • Integrated Services of Engineering & Architecture



Luean Rit Community Renovation

Yaowarat, Bangkok, Thailand

Scope of work:

Design, Construction, Construction
Management, Integrated Services
of Engineering & Architecture

On-going/Upcoming Projects

Interior Design

Rosewood Ploenchit Hotel - Guest Rooms, Public Area, Restaurant
Central Festival Phuket's Public Area
Central Rama 3 Public Area Renovation
Century Movie Plaza
Sleep Box at Don Mueang Airport
Paul Bakery at Siam Paragon

Exhibition & Events

Official Contractor - Money Expo Korat
Official Contractor – BIG Motor Sale 2017
Bank of Thailand's Banknote Production & Management Exhibition
BMW Pop Up Store at Central Chiangmai
BMW Pop Up Store at Central Plaza Rayong
BMW Lounge at Central Rama II
Mini Road Show at The Mall Korat
Luean Rit Community Renovation
Thai Airways Lounge Renovation – Phuket Airport

K... Station

'K Station', the second version of chalet designed by Kingsmen C.M.T.I. Plc., from the first one that launched last November 2016. The new development of design aims to ease the set-up time while safety and functional purpose for client's use is still our priority.



K...Kare

Kingsmen C.M.T.I. Plc. Continuous Commitment Towards Environmental Sustainability

Our company has put great importance upon environmental sustainability via both direct and indirect approaches, one of which is our custom-designed souvenirs that focuses on the usage of eco-friendly materials in consequence of the ecology to profess as a reminder to all of us, including our clients and representatives, to be in constant aware of our Earth.

Kare for “**Earth**” Collection,
to express our awareness
concerning the environment



2014 “Kingsmen 25 Years in Thailand” and “White & Green Organization” Cotton bag

Dyed and printed with eco-friendly solutions on cotton fabric on the purpose of being reusable and to reduce the manufacturing of plastic bags

2014 “Survival Kit”

Food packaging processed from excessed bagasse of the sugar industry, to reduce the usage of plastic and foam containers

2016 “Travel Kit”

Modifying excessed RePET (recycled plastic bottles), or post-consumer waste, into a compact travel luggage

2016 “Tiffin Carriers”

In addition to 2014’s Survival Kit, the company henceforth introduces “Tiffin Carriers” in remembrance of the past authentic approach to food containing, furthermore encouraging our staffs to bring them for lunch

2017 “Document Briefcase”

Our second souvenir that is based upon the idea of recycling post-consumer waste or RePET (recycled plastic bottles), now into a document briefcase to carry paperwork, a laptop, or miscellaneous objects

2017 “Biodegradable Corn Fiber Pen”

A pen designed to be made from biodegradable materials that do not leave residues in the environment



K...Pride

Kingsmen C.M.T.I. Plc. is one of the latest members certified by Thailand's Private Sector Collective Action against Corruption (CAC). The CAC is hosted and supported by the government and the National Anti-Corruption Commission (NACC). The company applied to be part of this project in order to commit and reinforce all actions against corruption on all company activities.

Kingsmen C.M.T.I. Plc. was certified as a member of CAC in March 2017, reflecting our commitment and awareness in anti-corruption by conducting business transparently and be responsible for all stakeholders.



Kingsmen's Network

Singapore (HQ)

Kingsmen Creatives Ltd
T: (65) 688 000 88
F: (65) 688 000 38
E: info@kingsmen-int.com
www.kingsmen-int.com

Greater China

Kingsmen Beijing Co., Ltd
T: (8610) 5208 9399
F: (8610) 5208 9300
E: kingsmen@kingsmen.com.cn
www.kingsmen-gc.com

Kingsmen Hong Kong Ltd
T: (852) 2646 8828
F: (852) 2637 8100
E: kingsmen@kingsmen.com.hk
www.kingsmen-gc.com

Kingsmen Macau Ltd
T: (852) 2646 8828
F: (852) 2637 8100
E: kingsmen@kingsmen.com.hk
www.kingsmen-gc.com

Kingsmen Shanghai Co., Ltd
T: (8621) 5386 9000
F: (8621) 5386 9555
E: kingsmen@kingsmen.com.cn
www.kingsmen-gc.com

Kingsmen Shenzhen Co., Ltd
T: (86) 755 8248 0848
F: (86) 755 8248 6116
E: kingsmen@kingsmen.com.hk
www.kingsmen-gc.com

Kingsmen Taiwan (Int'l) Co., Ltd
T: (886) 2 2779 0279
F: (886) 2 2279 0278
E: kingsmen@kingsmen.com.tw
www.kingsmen-gc.com

South Korea, Seoul

Kingsmen Korea Ltd
T: (82 31) 779 7500
F: (82 31) 779 7510
E: info@kingsmen.co.kr
www.kingsmen.co.kr

South Korea, Busan

Kingsmen E&E Ltd.
T: (82 31) 779 7500
F: (82 31) 779 7610
E: info@kingsmen.co.kr
www.kingsmen.co.kr

Thailand, Bangkok

Kingsmen C.M.T.I. Plc.
T: (66) 2735 8000
F: (66) 2735 8484
E: kingsmen@kingsmen-cmti.com
www.kingsmen-cmti.com

Vietnam, Ho Chi Minh City

Kingsmen Vietnam Co., Ltd.
T: (848) 3821 8960
F: (848) 3821 8980
E: info@kingsmen.com.vn
www.kingsmen.com.vn

Vietnam, Hanoi

Kingsmen Hanoi Office
T: (844) 3857 5215
F: (848) 3857 5219
E: info@kingsmen.com.vn
www.kingsmen.com.vn

U.A.E., Dubai

Kingsmen Middle East LLC
T: (971) 4 338 9340
F: (971) 4 338 9341
E: info@kingsmen-me.com
www.kingsmen-me.com

India, New Delhi

Kingsmen Fairtech Interiors
(P) Ltd
T: (91-11) 4660 6100
F: (91-11) 4660 6161
E: mailbox@kfi-india.com
www.kingsmenindia.in

Indonesia, Jakarta

PT Kingsmen Indonesia
T: (6221) 543 96898
F: (6221) 540 7819
E: office@kingsmenindonesia.co.id
www.kingsmenindonesia.co.id

Japan, Tokyo

Kingsmen Nikko Ltd
T: (813) 5365 2422
F: (813) 5365 2423
E: info@kingsmen.co.jp
www.kingsmen.co.jp

Japan, Osaka

Kingsmen Nikko Ltd
T: (816) 4391 7538
F: (816) 4391 7539
E: info-osaka@kingsmen.co.jp
www.kingsmen.co.jp

Malaysia, Kuala Lumpur

Kingsmen Sdn Bhd
T: (603) 9076 1010
F: (603) 9080 2990
E: kingsmen@kingsmen.com.my
www.kingsmen.com.my

Myanmar, Yangon

Kingsmen Myanmar Co. Ltd.
T: (95) 01 655 922 / (95) 92 5362 3322
E: kingsmen.myanmar@gmail.com
www.kingsmen-cmti.com

RETAIL SERVICES – US OFFICES

Canada, Toronto

Kingsmen Projects Pte Ltd.
T: (+1) 416 604 4508
F: (+1) 416 604 4503
E: markbadhwar@kingsmen
projects-us.com
www.kingsmenprojects-us.com

USA, Los Angeles

Kingsmen Projects US Corporation
T: (+1) 949 642 2555
F: (+1) 714 434 0919
E: stephenhekman@kingsmen
projects-us.com
www.kingsmenprojects-us.com



A communication design and production group.

19 offices across Asia Pacific & the Middle East

Retail & Commercial Interiors • Exhibitions & Events • Thematic & Museums • Alternative Marketing • Engineering & Architecture

Bangkok • Beijing • Busan • Dubai • Hanoi • Ho Chi Minh • Hong Kong • Jakarta • Kuala Lumpur • Macau • New Delhi • Osaka •
Singapore (HQ) • Seoul • Shanghai • Shenzhen • Taipei • Tokyo • Yangon